

## 验证报告

编号: SHAEC24000467602

日期: 2024 年 01 月 30 日

第 1 页, 共 8 页

客户名称: 伊振達(香港)電子有限公司  
客户地址: 香港, 灣仔, 莊士敦道 181 號大有大廈 21 樓

样品名称: 扁平振动马达  
以上样品及信息由客户提供。

SGS 工作编号: SHP24-000152  
样品接收时间: 2024 年 01 月 08 日  
验证周期: 2024 年 01 月 08 日 ~ 2024 年 01 月 18 日  
验证要求: 参考欧盟 RoHS 指令 2011/65/EU 的修正指令(EU) 2015/863。  
验证方法: 见后续页。  
验证程序和结果: 见后续页。

## 检测结果总结:

| 检测项目  | 结论 |
|---|----|
| 欧盟 RoHS 指令 2011/65/EU 附录 II 修正指令(EU) 2015/863- 铅, 汞, 镉, 六价铬, 多溴联苯(PBBs), 多溴二苯醚(PBDEs), 邻苯二甲酸二丁酯 (DBP), 邻苯二甲酸丁苄酯(BBP), 邻苯二甲酸二(2-乙基己基)酯(DEHP)和邻苯二甲酸二异丁酯(DIBP) | 符合 |

通标标准技术服务(上海)有限公司  
授权签名

陈皆欢

Jessica Chen 陈皆欢  
批准签署人

scan to see the report



50CE72F6



Unless otherwise agreed in writing, this document is issued by the Company subject to its General Conditions of Service printed overleaf, available on request or accessible at <http://www.sgs.com/en/Terms-and-Conditions.aspx> and, for electronic format documents, subject to Terms and Conditions for Electronic Documents at <http://www.sgs.com/en/Terms-and-Conditions/Terms-e-Document.aspx>. Attention is drawn to the limitation of liability, indemnification and jurisdiction issues defined therein. Any holder of this document is advised that information contained hereon reflects the Company's findings at the time of its intervention only and within the limits of Client's instructions, if any. The Company's sole responsibility is to its Client and this document does not exonerate parties to a transaction from exercising all their rights and obligations under the transaction documents. This document cannot be reproduced except in full, without prior written approval of the Company. Any unauthorized alteration, forgery or falsification of the content or appearance of this document is unlawful and offenders may be prosecuted to the fullest extent of the law. Unless otherwise stated the results shown in this test report refer only to the sample(s) tested.

Attention: To check the authenticity of testing/inspection report & certificate, please contact us at telephone: (86-755) 8307 1443, or email: [CN.Doccheck@sgs.com](mailto:CN.Doccheck@sgs.com)

SGS-CSTC (Shanghai) Technical Services (Shanghai) Co., Ltd.  
Testing Center - Chemical Laboratory

3<sup>rd</sup> Building, No. 889 Yishan Road Xuhui District, Shanghai China 200233 t E&E (86-21) 61402553 f E&E (86-21) 64953679 www.sgs.com.cn  
中国·上海·徐汇区宜山路889号3号楼 邮编: 200233 t HL (86-21) 61402594 f HL (86-21) 61156899 e [sgs.china@sgs.com](mailto:sgs.china@sgs.com)

样品照片



### 验证方法:

1. 参考 IEC 62321-2:2021, 拆分申请者提供的成品。
2. 参考 IEC 62321-1:2013, 仅对本报告照片中标识的样品进行了下列测试分析。
  - (1) 参考 IEC 62321-3-1: 2013, 用能量色散型 X 射线荧光分析仪器进行筛选。
  - (2) 湿法化学检测方法: 参考 IEC 62321-4:2013+A1:2017, IEC 62321-5:2013, IEC 62321-7-1:2015, IEC 62321-7-2:2017, ISO 17075-1:2017, IEC 62321-12:2023, IEC 62321-6:2015 和 IEC 62321-8:2017, 采用 ICP-OES, UV-Vis 和 GC- MS 进行分析。



Unless otherwise agreed in writing, this document is issued by the Company subject to its General Conditions of Service printed overleaf, available on request or accessible at <http://www.sgs.com/en/Terms-and-Conditions.aspx> and, for electronic format documents, subject to Terms and Conditions for Electronic Documents at <http://www.sgs.com/en/Terms-and-Conditions/Terms-e-Documents.aspx>. Attention is drawn to the limitation of liability, indemnification and jurisdiction issues defined therein. Any holder of this document is advised that information contained hereon reflects the Company's findings at the time of its intervention only and within the limits of Client's instructions, if any. The Company's sole responsibility is to its Client and this document does not exonerate parties to a transaction from exercising all their rights and obligations under the transaction documents. This document cannot be reproduced except in full, without prior written approval of the Company. Any unauthorized alteration, forgery or falsification of the content or appearance of this document is unlawful and offenders may be prosecuted to the fullest extent of the law. Unless otherwise stated the results shown in this test report refer only to the sample(s) tested.

Attention: To check the authenticity of testing / inspection report & certificate, please contact us at telephone: (86-755) 8307 1443, or email: [CN.Doccheck@sgs.com](mailto:CN.Doccheck@sgs.com)

3<sup>rd</sup> Building, No.889 Yishan Road Xuhui District, Shanghai China 200233 t E&E (86-21) 61402553 f E&E (86-21) 64953679 www.sgsgroup.com.cn  
 中国·上海·徐汇区宜山路889号3号楼 邮编: 200233 t HL (86-21) 61402594 f HL (86-21) 61156899 e sgs.china@sgs.com

# 验证报告

编号: SHAEC24000467602

日期: 2024年01月30日

第3页, 共8页

## 验证部件外观描述:

| 样品序号 | 样品编号 | SGS 样品 ID               | 样品描述                |
|------|------|-------------------------|---------------------|
| SN1  | A1   | SHA24-0004676-0001.C001 | VC1030 B400U-黑色粘性泡棉 |
| SN2  | A2   | SHA24-0004676-0001.C002 | VC1030 B400U-银色金属   |
| SN3  | A3   | SHA24-0004676-0001.C003 | VC1030 B400U-银色金属   |
| SN4  | A4   | SHA24-0004676-0001.C004 | VC1030 B400U-银色磁铁   |
| SN5  | A5   | SHA24-0004676-0001.C005 | VC1030 B400U-绿色 PCB |
| SN6  | A6   | SHA24-0004676-0001.C006 | VC1030 B400U-白色塑料   |
| SN7  | A7   | SHA24-0004676-0001.C007 | VC1030 B400U-银色金属   |
| SN8  | A8   | SHA24-0004676-0001.C008 | VC1030 B400U-铜色金属   |
| SN9  | B1   | SHA24-0004676-0002.C001 | VC1026 B002F-银色金属   |
| SN10 | B2   | SHA24-0004676-0002.C002 | VC1026 B002F-银色磁铁   |
| SN11 | B3   | SHA24-0004676-0002.C003 | VC1026 B002F-银色金属   |
| SN12 | B4   | SHA24-0004676-0002.C004 | VC1026 B002F-蓝色塑料   |
| SN13 | B5   | SHA24-0004676-0002.C005 | VC1026 B002F-红色塑料   |
| SN14 | C1   | SHA24-0004676-0003.C001 | VC1027200N-黑色塑料     |
| SN15 | C2   | SHA24-0004676-0003.C002 | VC1027200N-金色金属     |
| SN16 | D1   | SHA24-0004676-0004.C001 | VC0824 K001L-银色金属   |
| SN17 | D2   | SHA24-0004676-0004.C002 | VC0824 K001L-银色金属   |
| SN18 | D3   | SHA24-0004676-0004.C003 | VC0824 K001L-银色磁铁   |
| SN19 | D4   | SHA24-0004676-0004.C004 | VC0824 K001L-绿色 PCB |
| SN20 | E1   | SHA24-0004676-0005.C001 | VC0720 B088L-银色金属   |
| SN21 | E2   | SHA24-0004676-0005.C002 | VC0720 B088L-银色磁铁   |
| SN22 | E3   | SHA24-0004676-0005.C003 | VC0720 B088L-银色金属   |
| SN23 | E4   | SHA24-0004676-0005.C004 | VC0720 B088L-黄色 FPC |
| SN24 | E5   | SHA24-0004676-0005.C005 | VC0720 B088L-绿色 PCB |



Unless otherwise agreed in writing, this document is issued by the Company subject to its General Conditions of Service printed overleaf, available on request or accessible at <http://www.sgs.com/en/Terms-and-Conditions.aspx> and, for electronic format documents, subject to Terms and Conditions for Electronic Documents at <http://www.sgs.com/en/Terms-and-Conditions/Terms-e-Documents.aspx>. Attention is drawn to the limitation of liability, indemnification and jurisdiction issues defined therein. Any holder of this document is advised that information contained hereon reflects the Company's findings at the time of its intervention only and within the limits of Client's instructions, if any. The Company's sole responsibility is to its Client and this document does not exonerate parties to a transaction from exercising all their rights and obligations under the transaction documents. This document cannot be reproduced except in full, without prior written approval of the Company. Any unauthorized alteration, forgery or falsification of the content or appearance of this document is unlawful and offenders may be prosecuted to the fullest extent of the law. Unless otherwise stated the results shown in this test report refer only to the sample(s) tested.

Attention: To check the authenticity of testing / inspection report & certificate, please contact us at telephone: (86-755) 8307 1443, or email: [CN.Doccheck@sgs.com](mailto:CN.Doccheck@sgs.com)

SGS-CSTC (Shanghai) Technical Services (Shanghai) Co., Ltd. 3rd Building, No.889 Yishan Road Xuhui District, Shanghai China 200233 t E&E (86-21) 61402553 f E&E (86-21) 64953679 www.sgsgroup.com.cn  
 中国·上海·徐汇区宜山路889号3号楼 邮编: 200233 t HL (86-21) 61402594 f HL (86-21) 61156899 e sgs.china@sgs.com

## 验证报告

编号: SHAEC24000467602

日期: 2024年01月30日

第4页, 共8页

### 验证结果:

根据物料风险评估的结果, 验证送测样品中的以下材料。(除特别标注, 单位均为: mg/kg)

| 检测项目    | A1 | A2  | A3  | A4  | A5 | A6 | A7  | A8  |
|---------|----|-----|-----|-----|----|----|-----|-----|
| Cd      | BL | BL  | BL  | BL  | BL | BL | BL  | BL  |
| Pb      | BL | BL  | BL  | BL  | BL | BL | BL  | BL  |
| Hg      | BL | BL  | BL  | BL  | BL | BL | BL  | BL  |
| Cr(VI)▼ | BL | BL  | BL  | BL  | BL | BL | BL  | BL  |
| PBBs    | BL | --- | --- | BL  | BL | BL | --- | --- |
| PBDEs   | BL | --- | --- | BL  | BL | BL | --- | --- |
| DBP     | BL | --- | --- | --- | BL | BL | --- | --- |
| BBP     | BL | --- | --- | --- | BL | BL | --- | --- |
| DEHP    | BL | --- | --- | --- | BL | BL | --- | --- |
| DIBP    | BL | --- | --- | --- | BL | BL | --- | --- |
| 结论      | 符合 | 符合  | 符合  | 符合  | 符合 | 符合 | 符合  | 符合  |

| 检测项目    | B1  | B2  | B3  | B4 | B5 | C1 | C2  | D1  |
|---------|-----|-----|-----|----|----|----|-----|-----|
| Cd      | BL  | BL  | BL  | BL | BL | BL | BL  | BL  |
| Pb      | BL  | BL  | BL  | BL | BL | BL | BL  | BL  |
| Hg      | BL  | BL  | BL  | BL | BL | BL | BL  | BL  |
| Cr(VI)▼ | BL  | BL  | BL  | BL | BL | BL | BL  | BL  |
| PBBs    | --- | BL  | --- | BL | BL | BL | --- | --- |
| PBDEs   | --- | BL  | --- | BL | BL | BL | --- | --- |
| DBP     | --- | --- | --- | BL | BL | BL | --- | --- |
| BBP     | --- | --- | --- | BL | BL | BL | --- | --- |
| DEHP    | --- | --- | --- | BL | BL | BL | --- | --- |
| DIBP    | --- | --- | --- | BL | BL | BL | --- | --- |
| 结论      | 符合  | 符合  | 符合  | 符合 | 符合 | 符合 | 符合  | 符合  |

| 检测项目    | D2  | D3  | D4 | E1  | E2  | E3  | E4 | E5 |
|---------|-----|-----|----|-----|-----|-----|----|----|
| Cd      | BL  | BL  | BL | BL  | BL  | BL  | BL | BL |
| Pb      | BL  | BL  | BL | BL  | BL  | BL  | BL | BL |
| Hg      | BL  | BL  | BL | BL  | BL  | BL  | BL | BL |
| Cr(VI)▼ | BL  | BL  | BL | BL  | BL  | ND  | BL | BL |
| PBBs    | --- | BL  | BL | --- | BL  | --- | BL | BL |
| PBDEs   | --- | BL  | BL | --- | BL  | --- | BL | BL |
| DBP     | --- | --- | BL | --- | --- | --- | BL | BL |
| BBP     | --- | --- | BL | --- | --- | --- | BL | BL |
| DEHP    | --- | --- | BL | --- | --- | --- | BL | BL |
| DIBP    | --- | --- | BL | --- | --- | --- | BL | BL |
| 结论      | 符合  | 符合  | 符合 | 符合  | 符合  | 符合  | 符合 | 符合 |



SGS-CSTC (Shanghai) Co., Ltd.  
Testing Center-Chemical Laboratory

Unless otherwise agreed in writing, this document is issued by the Company subject to its General Conditions of Service printed overleaf, available on request or accessible at <http://www.sgs.com/en/Terms-and-Conditions.aspx> and, for electronic format documents, subject to Terms and Conditions for Electronic Documents at <http://www.sgs.com/en/Terms-and-Conditions/Terms-e-Documents.aspx>. Attention is drawn to the limitation of liability, indemnification and jurisdiction issues defined therein. Any holder of this document is advised that information contained hereon reflects the Company's findings at the time of its intervention only and within the limits of Client's instructions, if any. The Company's sole responsibility is to its Client and this document does not exonerate parties to a transaction from exercising all their rights and obligations under the transaction documents. This document cannot be reproduced except in full, without prior written approval of the Company. Any unauthorized alteration, forgery or falsification of the content or appearance of this document is unlawful and offenders may be prosecuted to the fullest extent of the law. Unless otherwise stated the results shown in this test report refer only to the sample(s) tested.

Attention: To check the authenticity of testing /inspection report & certificate, please contact us at telephone: (86-755) 8307 1443, or email: [CN.Doccheck@sgs.com](mailto:CN.Doccheck@sgs.com)

3<sup>rd</sup> Building, No. 889 Yishan Road Xuhui District, Shanghai China 200233

中国·上海·徐汇区宜山路889号3号楼 邮编: 200233

t E&E (86-21) 61402553 f E&E (86-21) 64953679 www.sgsgroup.com.cn

t HL (86-21) 61402594 f HL (86-21) 61156899 e [sgs.china@sgs.com](mailto:sgs.china@sgs.com)

备注:

(1) X 射线荧光光谱法(XRF)筛选结果说明:

(a)下表为 IEC62321-3-1: 2013 附录 A 不同基体材料中以 mg/kg 表示的筛选元素限值:

| 元素 | 聚合物  | 金属   | 复合材料   |
|----|--|--|--|
| Cd | $BL \leq (70-3\sigma) < X < (130+3\sigma) \leq OL$   | $BL \leq (70-3\sigma) < X < (130+3\sigma) \leq OL$   | $LOD < X < (150+3\sigma) \leq OL$                    |
| Pb | $BL \leq (700-3\sigma) < X < (1300+3\sigma) \leq OL$ | $BL \leq (700-3\sigma) < X < (1300+3\sigma) \leq OL$ | $BL \leq (500-3\sigma) < X < (1500+3\sigma) \leq OL$ |
| Hg | $BL \leq (700-3\sigma) < X < (1300+3\sigma) \leq OL$ | $BL \leq (700-3\sigma) < X < (1300+3\sigma) \leq OL$ | $BL \leq (500-3\sigma) < X < (1500+3\sigma) \leq OL$ |
| Br | $BL \leq (300-3\sigma) < X$                          | 不适用  | $BL \leq (250-3\sigma) < X$                          |
| Cr | $BL \leq (700-3\sigma) < X$                          | $BL \leq (700-3\sigma) < X$                          | $BL \leq (500-3\sigma) < X$                          |

(b) 现行法规限制的最大允许值是对 PBB/PBDE 和 Cr(VI) 而不是对 Br 和 Cr 的, 而 XRF 测定的是 Br 和 Cr。如果元素 Br 和或 Cr 的定量结果均高于限值(Br 计算基于在常见物质中 PBB/PBDE 的组成的理论计算), 则样品的筛选结果为“不确定”。

(c) EDXRF 的结果用于初步筛选, LOD=检出限, BL=低于限值, OL=超出限值, IN (符号“X”标记的区域)=不确定, 需要进一步研究, 我们建议客户用更精确的化学检测方法测试样品, 如用 ICP-OES 测试 Cd/Pb/Hg; 用 UV-Vis 测试 Cr(VI); 用 GC-MS 测试 PBBs/PBDEs。

(d) 对于复合材料, EDXRF 筛选检测 RoHS 元素所得数据可能与样品中实际含量不同。

(2) 邻苯二甲酸酯(PHTH)筛分结果只作初步筛选, 如果检测结果超出下表所规定的警戒范围, 我们采用更精确的化学检测方法检测样品, 用 GC-MS 检测 DBP、BBP、DEHP 和 DIBP (单位: mg/kg)。

| 检测项目                   | CAS No.  | 聚合物/复合材料          |
|------------------------|----------|-------------------|
| 邻苯二甲酸二丁酯 (DBP)         | 84-74-2  | $BL \leq 600 < X$ |
| 邻苯二甲酸丁苄酯 (BBP)         | 85-68-7  | $BL \leq 600 < X$ |
| 邻苯二甲酸二(2-乙基己基)酯 (DEHP) | 117-81-7 | $BL \leq 600 < X$ |
| 邻苯二甲酸二异丁酯 (DIBP)       | 84-69-5  | $BL \leq 600 < X$ |

(3) 化学检测方法结果说明:

(a)  $mg/kg = 0.0001\%$ , MDL=方法检测限, ND =未检出(低于 MDL), --- =不适用。

(b) 化学检测方法的表达单位和方法检测限

| 检测项目  | Pb    | Cd    | Hg    | DBP   | BBP   | DEHP  | DIBP  |
|-------|-------|-------|-------|-------|-------|-------|-------|
| 单位    | mg/kg | mg/kg | mg/kg | mg/kg | mg/kg | mg/kg | mg/kg |
| 方法检测限 | 10    | 10    | 10    | 100   | 100   | 100   | 100   |

任何一种 PBBs 和 PBDEs 的方法检测限是 100 mg/kg;

聚合物, 复合材料和皮革样品中 Cr(VI)的方法检测限是 10 mg/kg。

金属样品中 Cr(VI)的方法检测限是 0.10  $\mu g/cm^2$ 。

(c) ▼ = 金属样品中

a. 当六价格的浓度高于 0.13  $\mu g/cm^2$ 时, 样品为阳性, 即含有六价格;

b. 当六价格的浓度为 ND(低于 0.10  $\mu g/cm^2$ )时, 样品为阴性, 即未检测到六价格;

c. 当六价格的浓度介于 0.10  $\mu g/cm^2$ 与 0.13  $\mu g/cm^2$ 之间时, 无法直接判定是否检测到六价格, 因不同个体的样品表面差异可能会影响测定结果;

由于未获知样品的存储条件和生产日期, 样品的六价格检测结果仅能代表检测时样品含六价格的状态。

(4) RoHS 指令中限制物质及均质材料中最大允许浓度值: Cd: 0.01%, Pb/Hg/Cr(VI)/PBBs/PBDEs/ DEHP /DBP/BBP/DIBP: 0.1%, 限值引用自 RoHS 指令(EU) 2015/863。



Unless otherwise agreed in writing, this document is issued by the Company subject to its General Conditions of Service printed overleaf, available on request or accessible at <http://www.sgs.com/en/Terms-and-Conditions.aspx> and, for electronic format documents, subject to Terms and Conditions for Electronic Documents at <http://www.sgs.com/en/Terms-and-Conditions/Terms-e-Documents.aspx>. Attention is drawn to the limitation of liability, indemnification and jurisdiction issues defined therein. Any holder of this document is advised that information contained hereon reflects the Company's findings at the time of its intervention only and within the limits of Client's instructions, if any. The Company's sole responsibility is to its Client and this document does not exonerate parties to a transaction from exercising all their rights and obligations under the transaction documents. This document cannot be reproduced except in full, without prior written approval of the Company. Any unauthorized alteration, forgery or falsification of the content or appearance of this document is unlawful and offenders may be prosecuted to the fullest extent of the law. Unless otherwise stated the results shown in this test report refer only to the sample(s) tested.

Attention: To check the authenticity of testing /inspection report & certificate, please contact us at telephone: (86-755) 8307 1443, or email: [CN.Doccheck@sgs.com](mailto:CN.Doccheck@sgs.com)

3<sup>rd</sup> Building, No.889 Yishan Road Xuhui District, Shanghai China 200233 t E&E (86-21) 61402553 f E&E (86-21) 64953679 www.sgsgroup.com.cn  
 中国·上海·徐汇区宜山路889号3号楼 邮编: 200233 t HL (86-21) 61402594 f HL (86-21) 61156899 e [sgs.china@sgs.com](mailto:sgs.china@sgs.com)

## 验证报告

编号: SHAEC24000467602

日期: 2024 年 01 月 30 日

第 6 页, 共 8 页

(5) IEC 62321 系列等同于 EN 62321 系列。

除非另有说明, 参照 ILAC-G8:09/2019, 使用简单接受 ( $w=0$ ) 的二元判定规则进行符合性判定。  
除非另有说明, 此报告结果仅对检测的样品负责。本报告未经本公司书面许可, 不可部分复制。  
检测报告仅用于客户科研、教学、内部质量控制、产品研发等目的, 仅供内部参考。



SGS-CSTC Standards Technical Services (Shanghai) Co., Ltd.  
Testing Center-Chemical Laboratory

Unless otherwise agreed in writing, this document is issued by the Company subject to its General Conditions of Service printed overleaf, available on request or accessible at <http://www.sgs.com/en/Terms-and-Conditions.aspx> and, for electronic format documents, subject to Terms and Conditions for Electronic Documents at <http://www.sgs.com/en/Terms-and-Conditions/Terms-e-Documents.aspx>. Attention is drawn to the limitation of liability, indemnification and jurisdiction issues defined therein. Any holder of this document is advised that information contained hereon reflects the Company's findings at the time of its intervention only and within the limits of Client's instructions, if any. The Company's sole responsibility is to its Client and this document does not exonerate parties to a transaction from exercising all their rights and obligations under the transaction documents. This document cannot be reproduced except in full, without prior written approval of the Company. Any unauthorized alteration, forgery or falsification of the content or appearance of this document is unlawful and offenders may be prosecuted to the fullest extent of the law. Unless otherwise stated the results shown in this test report refer only to the sample(s) tested.

Attention: To check the authenticity of testing / inspection report & certificate, please contact us at telephone: (86-755) 8307 1443, or email: [CN.Doccheck@sgs.com](mailto:CN.Doccheck@sgs.com)

3<sup>rd</sup> Building, No. 889 Yishan Road Xuhui District, Shanghai China 200233 t E&E (86-21) 61402553 f E&E (86-21) 64953679 www.sgs.com.cn  
中国·上海·徐汇区宜山路889号3号楼 邮编: 200233 t HL (86-21) 61402594 f HL (86-21) 61156899 e [sgs.china@sgs.com](mailto:sgs.china@sgs.com)

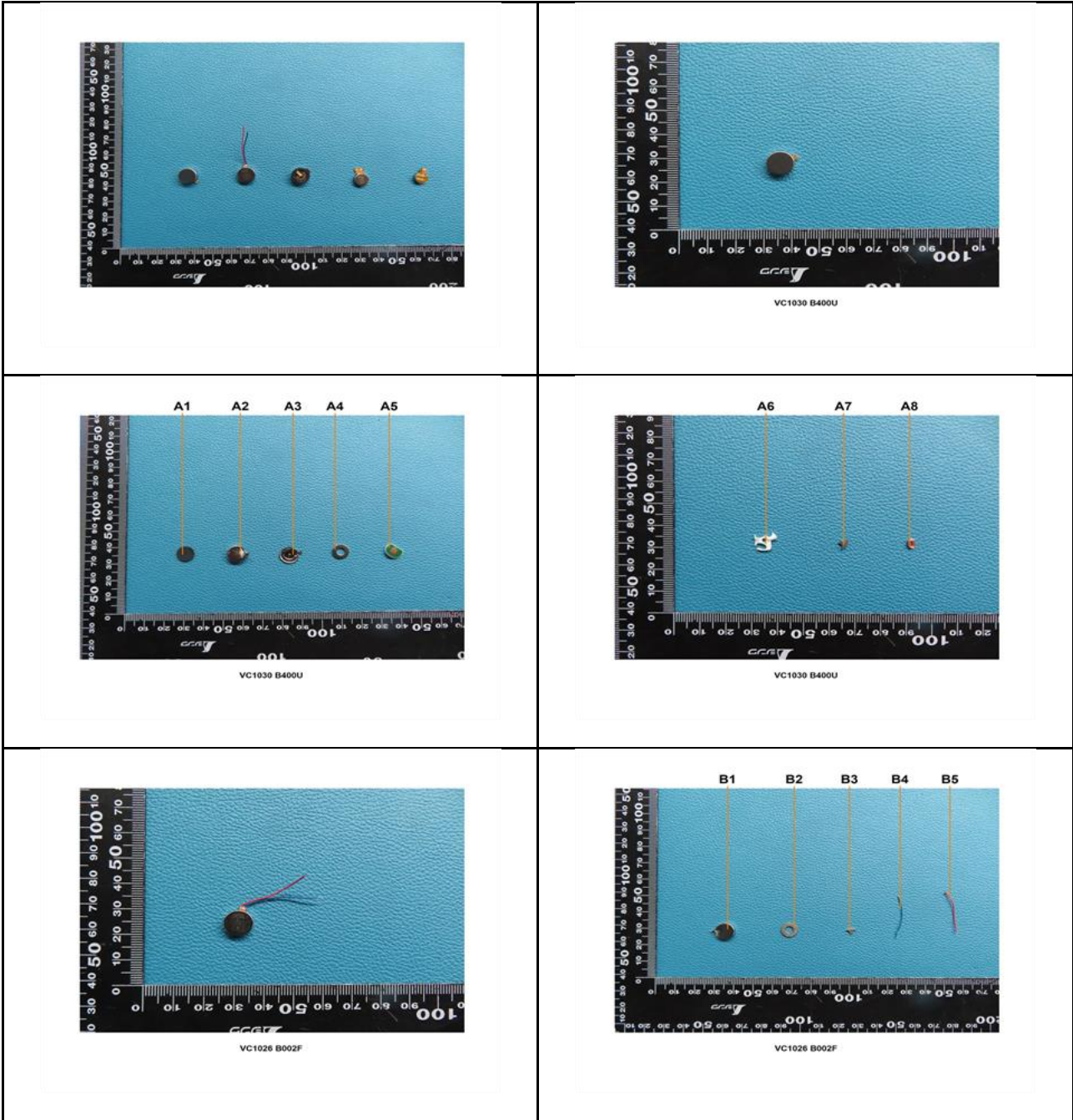
## 验证报告

编号: SHAEC24000467602

日期: 2024年01月30日

第7页, 共8页

样品照片:



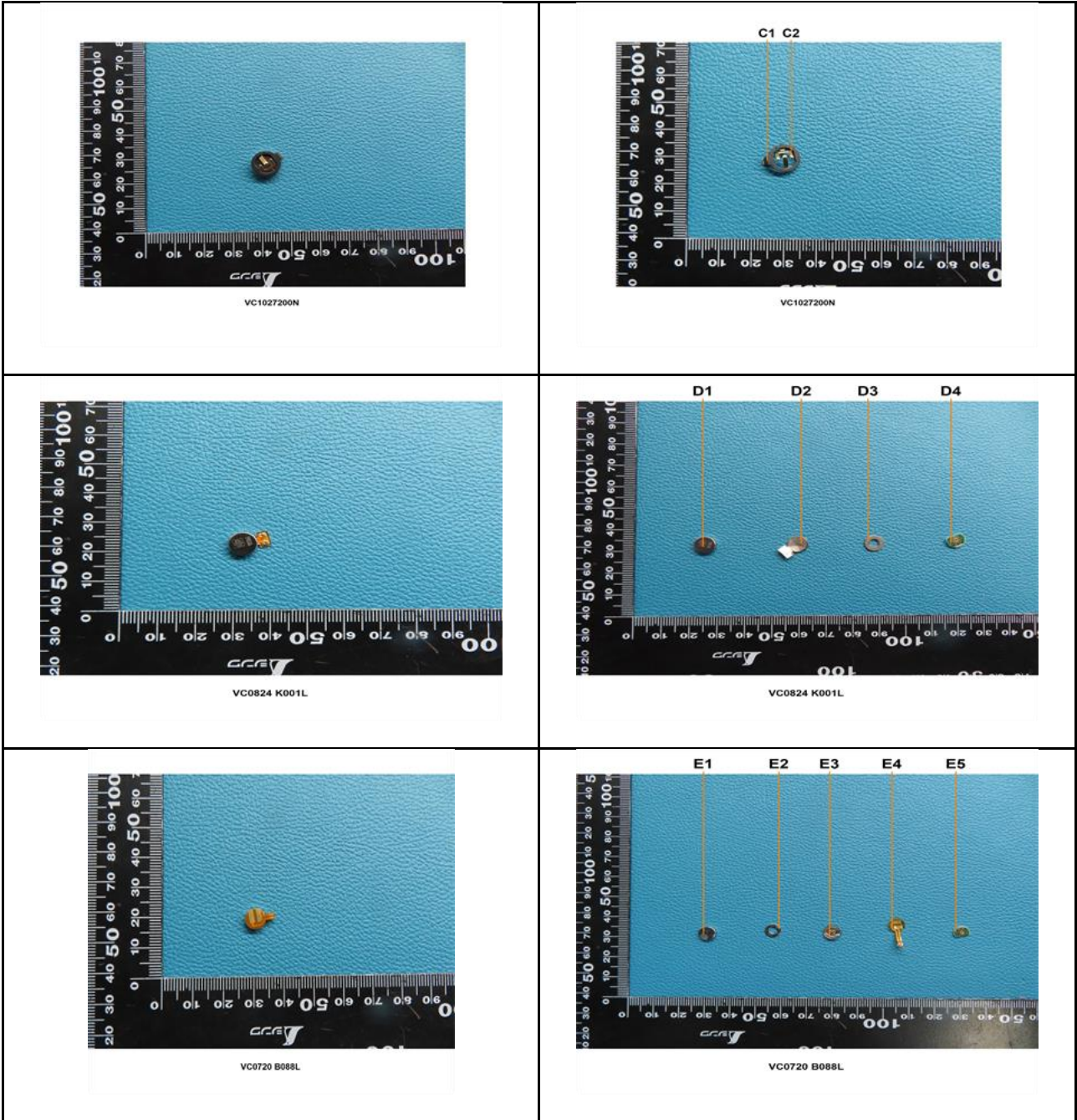
Unless otherwise agreed in writing, this document is issued by the Company subject to its General Conditions of Service printed overleaf, available on request or accessible at <http://www.sgs.com/en/Terms-and-Conditions.aspx> and, for electronic format documents, subject to Terms and Conditions for Electronic Documents at <http://www.sgs.com/en/Terms-and-Conditions/Terms-e-Documents.aspx>. Attention is drawn to the limitation of liability, indemnification and jurisdiction issues defined therein. Any holder of this document is advised that information contained hereon reflects the Company's findings at the time of its intervention only and within the limits of Client's instructions, if any. The Company's sole responsibility is to its Client and this document does not exonerate parties to a transaction from exercising all their rights and obligations under the transaction documents. This document cannot be reproduced except in full, without prior written approval of the Company. Any unauthorized alteration, forgery or falsification of the content or appearance of this document is unlawful and offenders may be prosecuted to the fullest extent of the law. Unless otherwise stated the results shown in this test report refer only to the sample(s) tested.

Attention: To check the authenticity of testing / inspection report & certificate, please contact us at telephone: (86-755) 8307 1443, or email: [CN.Doccheck@sgs.com](mailto:CN.Doccheck@sgs.com)

SGS-CSTC Standards Technical Services (Shanghai) Co., Ltd.  
Testing Center - Chemical Laboratory

3<sup>rd</sup> Building, No. 889 Yishan Road Xuhui District, Shanghai China 200233  
中国·上海·徐汇区宜山路889号3号楼 邮编: 200233

t E&E (86-21) 61402553 f E&E (86-21) 64953679 www.sgsgroup.com.cn  
t HL (86-21) 61402594 f HL (86-21) 61156899 e [sgs.china@sgs.com](mailto:sgs.china@sgs.com)



此照片仅限于随 SGS 正本报告使用

\*\*\*报告结束\*\*\*



SGS-CSTC (Shanghai) Technical Services Co., Ltd.  
Testing Center-Chemical Laboratory

Unless otherwise agreed in writing, this document is issued by the Company subject to its General Conditions of Service printed overleaf, available on request or accessible at <http://www.sgs.com/en/Terms-and-Conditions.aspx> and, for electronic format documents, subject to Terms and Conditions for Electronic Documents at <http://www.sgs.com/en/Terms-and-Conditions/Terms-e-Documents.aspx>. Attention is drawn to the limitation of liability, indemnification and jurisdiction issues defined therein. Any holder of this document is advised that information contained hereon reflects the Company's findings at the time of its intervention only and within the limits of Client's instructions, if any. The Company's sole responsibility is to its Client and this document does not exonerate parties to a transaction from exercising all their rights and obligations under the transaction documents. This document cannot be reproduced except in full, without prior written approval of the Company. Any unauthorized alteration, forgery or falsification of the content or appearance of this document is unlawful and offenders may be prosecuted to the fullest extent of the law. Unless otherwise stated the results shown in this test report refer only to the sample(s) tested.

Attention: To check the authenticity of testing / inspection report & certificate, please contact us at telephone: (86-755) 8307 1443, or email: [CN.Doccheck@sgs.com](mailto:CN.Doccheck@sgs.com)

3<sup>rd</sup> Building, No.889 Yishan Road Xuhui District, Shanghai China 200233

中国·上海·徐汇区宜山路889号3号楼 邮编: 200233

t E&E (86-21) 61402553 f E&E (86-21) 64953679 www.sgsgroup.com.cn

t HL (86-21) 61402594 f HL (86-21) 61156899 e [sgs.china@sgs.com](mailto:sgs.china@sgs.com)